



SACO VALLEY LAND TRUST

2018

PRESERVING LAND IN THE SACO RIVER VALLEY SINCE 1988

sacovalleylandtrust.org

30 YEARS!

Officers:

Chair: Richard Rhames

Vice Chair: Nicol Tift

Sec.: Sue Littlefield

Board of Directors:

Denis Rioux

Chris DiMatteo

Advisory Board:

Mike Brennan

Nan Cone

Dan Dallaire

Tamara Gallagher

Jim & Edna Leary

Annica McGuirk

Sue Sladen

*Meetings are held
on the first Thursday,
monthly,
7 pm, Saco City Hall.*

*Annual meeting:
May 3, 2018*

Website-

*For information and
maps:*

**sacovalleylandtrust.
org:**

*Facebook.com/saco
valleylandtrust:*

Contact us:

*sacovalleymaine@gmail.
com*

P.O. Box 1581

Saco, ME 04072

THE NUTTER GRAVEYARD- MONITORING IN BUXTON

Sometimes serendipity happens. I was having a casual conversation with my friends Bill and Meredith Small and because I monitor the Land Trust's lands she mentioned that she had a friend who had been looking for an ancestral gravesite in Buxton for at least 15 years. She had confusing and dated instructions as to where it was located and had had many fruitless attempts to find it, and was about to give up. The names she was looking for were Lemuel Nutter and Lucinda Dennett Carl. The Nutter name rang a bell in my head so I hiked in to the old gravesite that I had discovered on the Merrill easement in Buxton and sure enough many of the old slate gravestones had the name Nutter. I sent on a picture to Meredith, who forwarded it to Clara Pate and within a couple of days Clara and I were traipsing in to inspect the gravesite. Clara was overjoyed and at long last gratified in her search, a triumph of perseverance. Within days of that we were again inspecting and photographing the graves this time with her husband Bob, who was the actual descendant, and a neighbor Henry Beeuwkes. Henry and I made a successful foray to find the old Nutter Homestead foundation and well. By then Clara had alerted others who might have an interest in the gravesite and soon after I was taking Melissa Ives on a tour, who had a documented ancestral worksheet that connected her to Lemuel Nutter, another grave at the site.

For me it was also gratifying. Monitoring is at its best uneventful, but at other times I make unpleasant discoveries that need rectifying. This was very pleasant. I look forward to hearing if any of our readers have any other connections to this or other gravesites on Simpson Rd., including the Hopkinson Gravesite on the River Bend Farm. / Nicol Tift



If you think conservation is expensive, just imagine the future costs for clean air, clean water and healthy natural systems if we don't invest today.

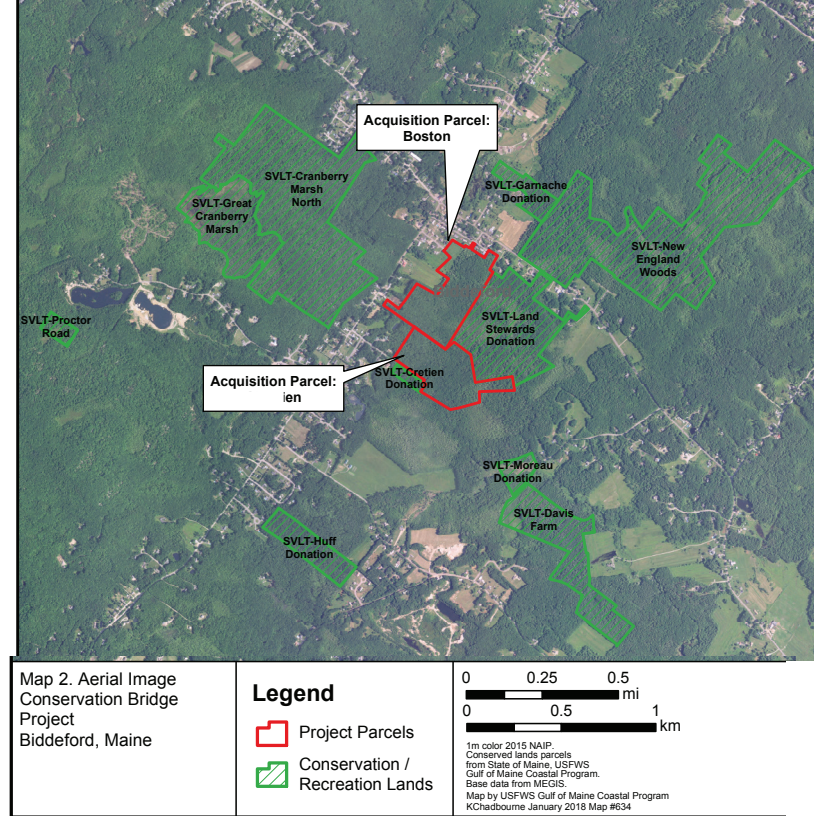
Edward McMahon Common Ground Vol 14 No. 1

2017 wrap-up

- *Completed management plans for most of our 26 in-fee properties, working with NRCS*
- *Road improvement and invasive control completed at Moses Woodman Preserve and Wedgewood Donation*
- *Received grants from Davis Conservation Foundation, Saco & Biddeford Savings Institution and Fields Pond Foundation for our CONSERVATION BRIDGE PROJECT*

In our 30 years of existence, SVLT has been fortunate to accumulate thirty two holdings in Biddeford, Saco and Buxton. Of those, eleven lots in eastern Biddeford are located near the intersection of West St. and Guinea Rd. and are within the *state-designated Biddeford/Kennebunkport Vernal Pool Complex*. We have been fortunate to acquire these lots or easements through various means; donations by landowners, developers and the City, funding through private foundations, and federal grants.

- 1989 • Chappell Easement, *donated by Arlene Chappell*
- 1992 • Moreau Donation, *donated by Ben Moreau*
- 1994 • Chretien Donation, *donated by James Chretien*
- 2003 • Land Stewards Donation-*donated by the Arundel Land Stewards,*
- 2006 • Davis Farm-*Donated by David Anderson, open space of subdivision*
- 2008 • Huff Donation-*donated by Kevin and Denise Huff*
- 2009 • Garnache Donation-*donated by Pauline Garnache*
- 2010 • Cranberry Marsh North- *Easement purchased through foundation and USFWS grants*
- 2011 • New England Woods-*Easement donated, as part of wetland mitigation, by UNE*
- 2011 • Proctor Rd Donation-*donated by City of Biddeford*
- 2011 • Great Cranberry Marsh-*donated by City of Biddeford*



Because of its unique geological characteristics, this area is ideal habitat for many species of concern, including reptiles, amphibians, and migrating water- and songbirds. There are forested uplands that grew up after the 1947 fire and fields that are remnants of a farming past, interspersed with wetlands, brooks and tributaries to the Little and Batson Rivers. *These parcels are significant because of their proximity to each other and their location in this diversity-rich area.*

We have a unique opportunity to work towards our goal to strengthen the land connections between these eleven lots. The first phase of this project, which we are calling the *Conservation Bridge*, requires local support, as well as foundation interest and much hard work by the SVLT Board.

Conservation Bridge Project-2018-2019 Goals:

- PURCHASED!!!! Lot #1, bargain sale by a generous landowner
- Purchase, by bargain sale, CBP Lot #2

We hope you are someone who sees the value of protecting and connecting open spaces in Biddeford that: • protect and/or improve habitat • improve water quality • work towards healthy forests • encourage outdoor recreation

Please donate today towards this significant purchase, by mail or by visiting our website: sacovalleylandtrust.org.



The following organizations have provided support to the Conservation Bridge Project as of April 2018:

- *Davis Conservation Foundation*
- *Saco & Biddeford Savings Institution*
- *Fields Pond Foundation*



Keeping Up With SVLT News

We have upgraded our website, sacovalleylandtrust.org, and hope to use it to keep you all informed of our activity. If you would like to receive an email reminder to check the website when new content is added, or to be informed of events, just write your address on the membership form, or send us a request at sacovalleymaine@gmail.com. We also are trying to post to **Facebook/sacovalleylandtrust.com** frequently.

Recognizing our Supporters!!!

Thank You to our longtime members for their continuing vision

Thank You for their grants towards our Conservation Bridge Project:

Davis Conservation Foundation • Saco & Biddeford Savings • Fields Pond Foundation

Thank You to UNE Sustainability Club for their fundraising activities to benefit SVLT

Thank You to Deering Lumber for lumber donations (see article below for one project)

And Many, Many Thanks to our members who donated to support our recent easement defense



New Bridge At Woodman Preserve

To earn the rank of Eagle Scout, Troop 371 BSA member Carl Meserve of Saco organized a project to replace the rustic bridge and re-route part of Sean's Trail along the Saco River at the Woodman Preserve on Simpson Rd. in Buxton.

Eagle projects require extensive planning, working with local organizations, encouraging Scouts and others to come to work parties, meeting timelines and presenting the project in front of a committee for final approval. Eagle rank is the highest rank in Boy Scouting and is currently earned by only 6% of Scouts. Pictured at right: Nolan Green, Orion Delima, Evan Green, Carl Meserve

30
Years

We encourage our
members to add \$30
to their normal membership donation
this year in celebration of
30 years
in local conservation.

Yes! I want to join Saco Valley Land Trust in 2018 and support conservation in Biddeford, Saco and Buxton.

Name _____ new - returning member

Address _____

Email (permission to send quarterly news) _____

Join as a member: \$30 \$50 \$100 \$250 \$500 other \$ _____

I would like to become a business sponsor at the \$ _____ /year level

I would like to donate to the **Conservation Bridge Project** \$ _____

☐ YES! I am adding \$30 in celebration of SVLT's 30th Year

Please mail to: Saco Valley Land Trust, P.O. Box 1581, Saco, Me 04072
Donations by debit/credit card or Paypal accepted securely at our website:
sacovalleylandtrust.org



Saco Valley Land Trust
P.O.Box 1581
Saco, Me 04072

30 YEARS!

30 YEARS:

- 622 acres • donated or purchased
- 428 acres • under easement
- 4 miles • of trails, thanks to Saco Bay Trails and Boy Scout Troop 371, Saco
- 1050 acres • where exploring, birding, hunting, fishing or geocaching is allowed
- 500 acres • conserved within the Biddeford/Kennebunkport Vernal Pool Complex

Tokens, Taxes, and Trusts

Passage of the recent federal tax bill has prompted concerns among 501c3 nonprofit entities (such as land trusts) that charitable contributions could take a hit. Given the typically precarious financial situation of most all-volunteer conservation organizations (like SVLT), that's a "challenge" we could do without. The widely-touted assumption has been that an increase in the "standard deduction" would lead to less itemizing; hence fewer contributions.

Luckily, reports Maine conservation law attorney Rob Levin: Despite expecting somewhat lower private contributions and likely, less federal funding for conservation (among other things), local land trusts tend to "enjoy very loyal donor bases."

SVLT has been very fortunate through its 30 years of existence, to have attracted a steadfast core group of supporters. As we turn to new acquisition projects and the future we hope to attract new members and further financial reinforcement of our efforts in perpetual landscape conservation.

We look forward to The Next Thirty Years. Won't you join us?

